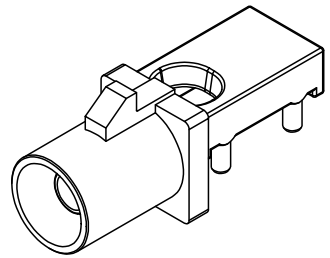
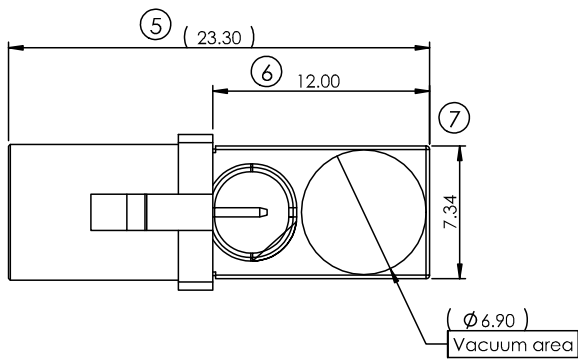


1	2	3	4	5	6	7	8				
THIS DRAWING AND THE DATA DISCLOSED HEREIN OR HEREWITH IS NOT TO BE REPRODUCED USED OR DISCLOSED IN WHOLE OR IN PART TO ANYONE WITHOUT THE PERMISSION OF JESS-LINK PRODUCTS CO.,LTD.(JPC)				CUSTOMER DRAWING DRWC-007686		REV.	ECN NO.	DESCRIPTION	MDF'D	APP'D	DATE
						01		INITIAL DESIGN	Philip	Richard	06/28/2023
						02					
						03					

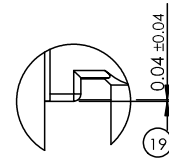
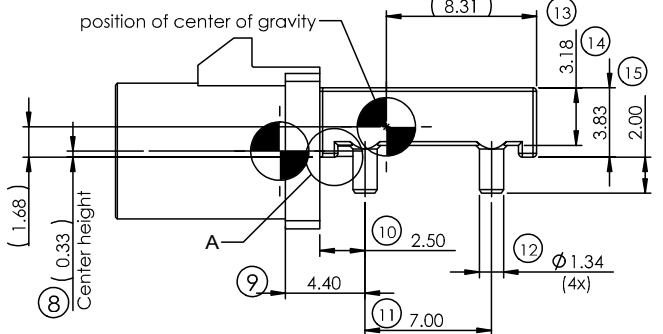
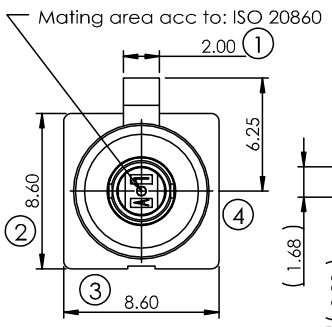
A  
B  
C  
D  
E  
F

A  
B  
C  
D  
E  
F

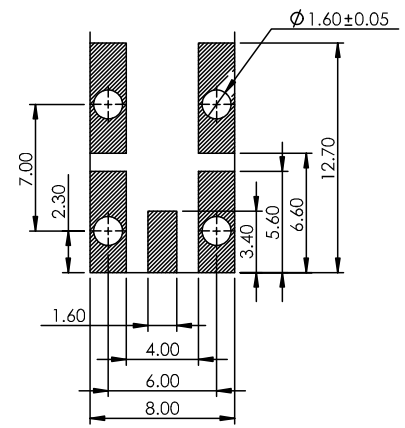


**SPECIFICATION**  
**MATERIAL**  
 Insulator: LCP E130i  
 Center Contact: C2680-H  
 Shell: Zamak3  
 Housing: PA4T  
**PLATING**  
 Center Contact: 6u" Gold on Contact Area,  
 50u"~150u" Matte Tin on Solder Tails,  
**ELECTRICAL**  
 Impedance: 50Ω  
 Insulator Resistance: 1000MΩ Min, at 100V DC  
 Withstanding Voltage: AC 800Vrms Min. 60Hz  
 Voltage Rating: AC 335Vrms  
 Current Rating: 1.0A Max.  
 Contact Resistance: 10mΩ Max. at 20mV Max.  
 Operation Temp. Range: -40 degree to +105 degree  
 Mating Cycles: 25 insertions

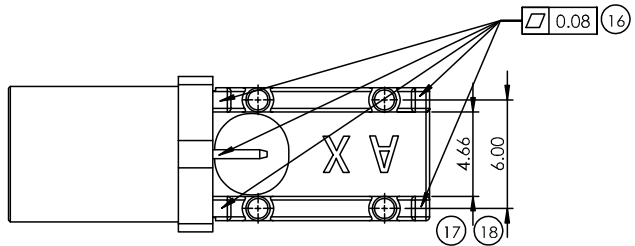
**PACKING STYLE**  
 Tape & Reel



細部放大圖 A







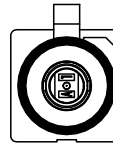

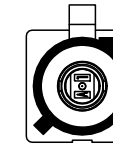






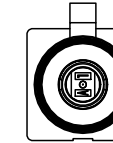
RECOMMENDED P.C.B. LAYOUT  
 TOLERANCE : ±0.02mm



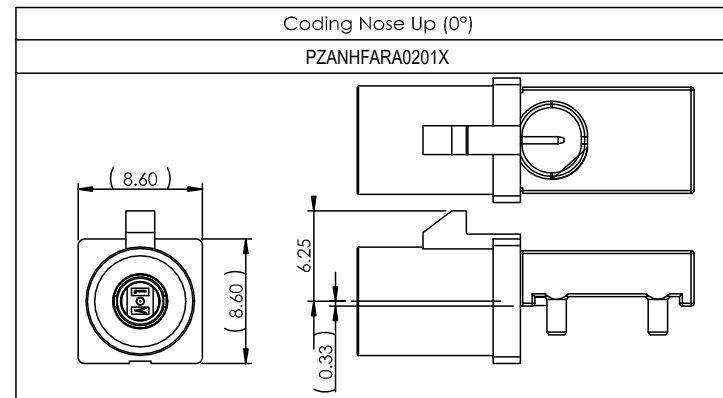
<b>RoHS COMPLIANT</b>	Unit:mm(inch)	PROJECTION	<b>JPC connectivity</b>	
	GENERAL TOLERANCES: (UNLESS SPECIFIED)	D.R. 06/28/2023	TITLE	PD./FILE NO.
	0 =±1 (0.039)	Philip	Fakra Plug X-Code Connector, PCB Mid-mount, CH=0.33mm	
	0.0 =±.5 (0.02)	CH.K 06/28/2023	Philip	REV. 01
0.00 =±.3 (0.012)	APV.D 06/28/2023	Richard	PZANHFARA0201X	SHEET 1 OF 2
0.000=±.15(0.006)			SCALE	SIZE
0° =± 2'			3:1	A4
0.0° =± 1'				


1	2	3	4	5	6	7	8				
THIS DRAWING AND THE DATA DISCLOSED HEREIN OR HEREWITH IS NOT TO BE REPRODUCED USED OR DISCLOSED IN WHOLE OR IN PART TO ANYONE WITHOUT THE PERMISSION OF JESS-LINK PRODUCTS CO.,LTD.(JPC)				CUSTOMER DRAWING DRWC-007686		REV.	ECN NO.	DESCRIPTION	MDF'D	APP'D	DATE
						01		INITIAL DESIGN	Philip	Richard	06/28/2023
						02					
						03					

Codings 1 : 1

Coding	A	B	C	D	E	F	G
Plug							
Color	Black	White	Blue	Bordeaux Violet	Green	Brown	Gray
Coding	H	I	K	L	M	N	Z
Plug							
Color	Violet	Beige	Curry	Camine Red	Pastel Orange	Pastel Green	Water Blue

KEY	Product Name	Color	P/N.
A	Fakra Plug A-Code Connector,PCB Mid-mount,CH=0.33mm	Black	PZANHFARA0201A
B	Fakra Plug B-Code Connector,PCB Mid-mount,CH=0.33mm	White	PZANHFARA0201B
C	Fakra Plug C-Code Connector,PCB Mid-mount,CH=0.33mm	Blue	PZANHFARA0201C
D	Fakra Plug D-Code Connector,PCB Mid-mount,CH=0.33mm	Bordeaux Violet	PZANHFARA0201D
E	Fakra Plug E-Code Connector,PCB Mid-mount,CH=0.33mm	Green	PZANHFARA0201E
F	Fakra Plug F-Code Connector,PCB Mid-mount,CH=0.33mm	Brown	PZANHFARA0201F
G	Fakra Plug G-Code Connector,PCB Mid-mount,CH=0.33mm	Gray	PZANHFARA0201G
H	Fakra Plug H-Code Connector,PCB Mid-mount,CH=0.33mm	Violet	PZANHFARA0201H
I	Fakra Plug I-Code Connector,PCB Mid-mount,CH=0.33mm	Beige	PZANHFARA0201I
K	Fakra Plug K-Code Connector,PCB Mid-mount,CH=0.33mm	Curry	PZANHFARA0201K
L	Fakra Plug L-Code Connector,PCB Mid-mount,CH=0.33mm	Camine Red	PZANHFARA0201L
M	Fakra Plug M-Code Connector,PCB Mid-mount,CH=0.33mm	Pastel Orange	PZANHFARA0201M
N	Fakra Plug N-Code Connector,PCB Mid-mount,CH=0.33mm	Pastel Green	PZANHFARA0201N
Z	Fakra Plug Z-Code Connector,PCB Mid-mount,CH=0.33mm	Water Blue	PZANHFARA0201Z



<b>RoHS COMPLIANT</b>	Unit:mm (inch)	PROJECTION	<b>JPC connectivity</b>	
	GENERAL TOLERANCES: (UNLESS SPECIFIED)			
	0 = ±1 (0.039)	D.R. 06/28/2023	TITLE	PD./FILE NO.
	0.0 = ±1.5 (0.062)	Philip	Fakra Plug X-Code Connector, PCB Mid-mount, CH=0.33mm	
0.00 = ±0.3 (0.012)	CH.K 06/28/2023	Philip	REV. 01	
0.000 = ±0.15 (0.006)	Philip	APV.D 06/28/2023	SHEET 2 OF 2	
0° = ±2'	Richard	SCALE	SIZE	PART NO.
0.0° = ±1'		3:1	A4	PZANHFARA0201X